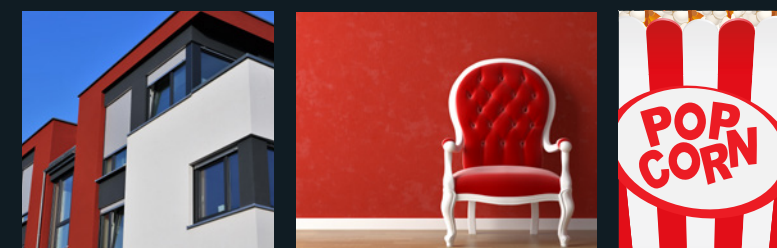
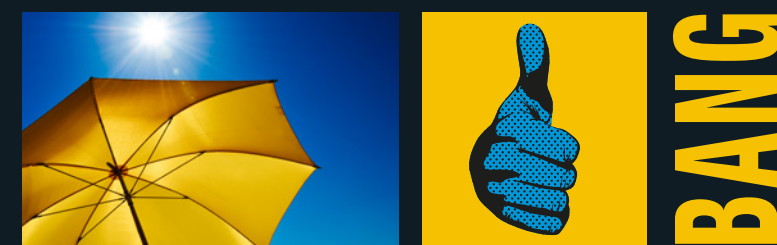
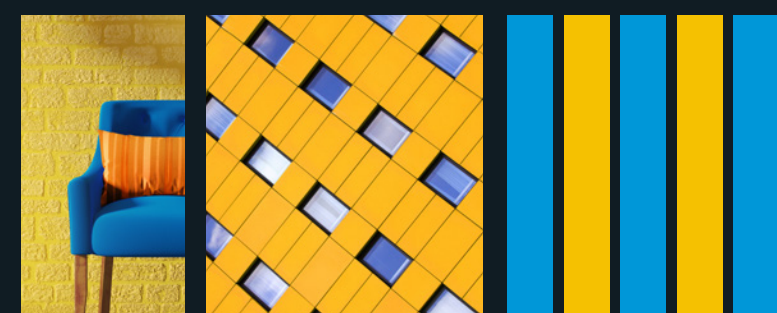
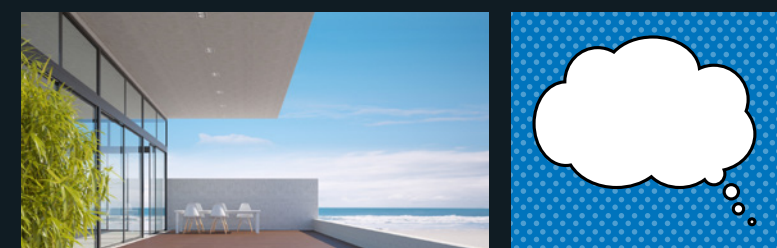
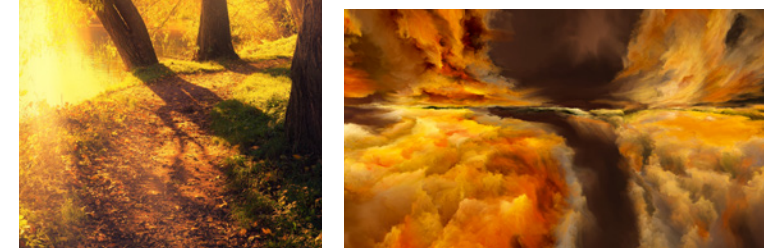


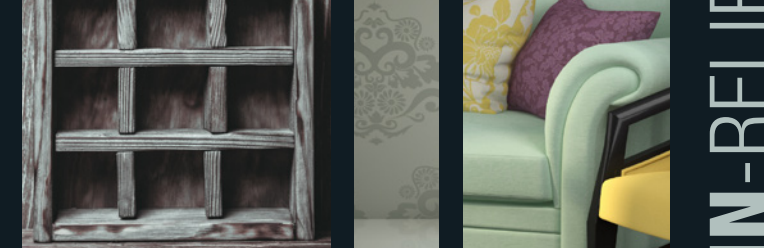
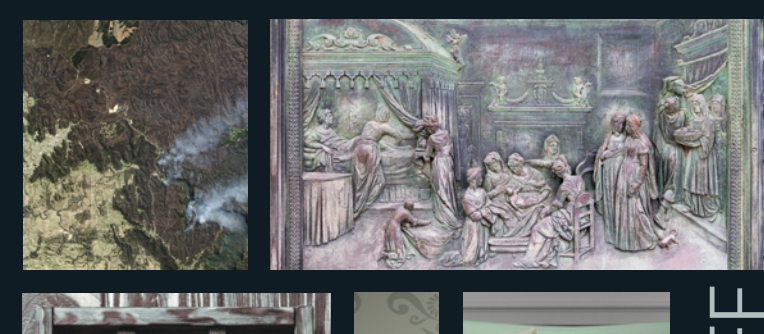
POP ART



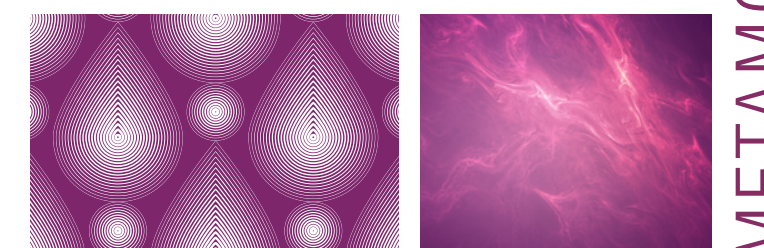
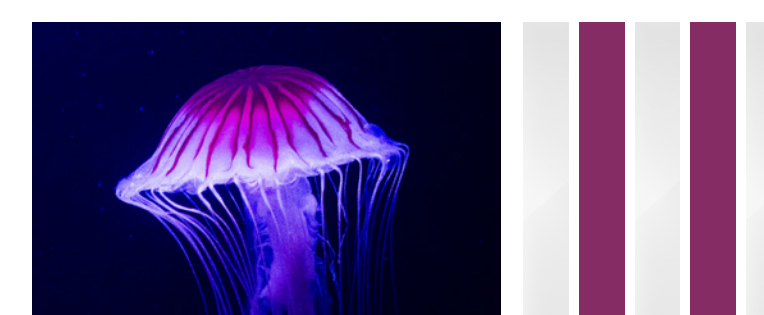
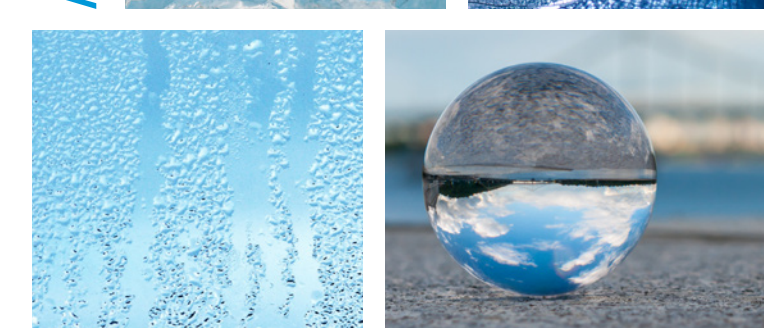
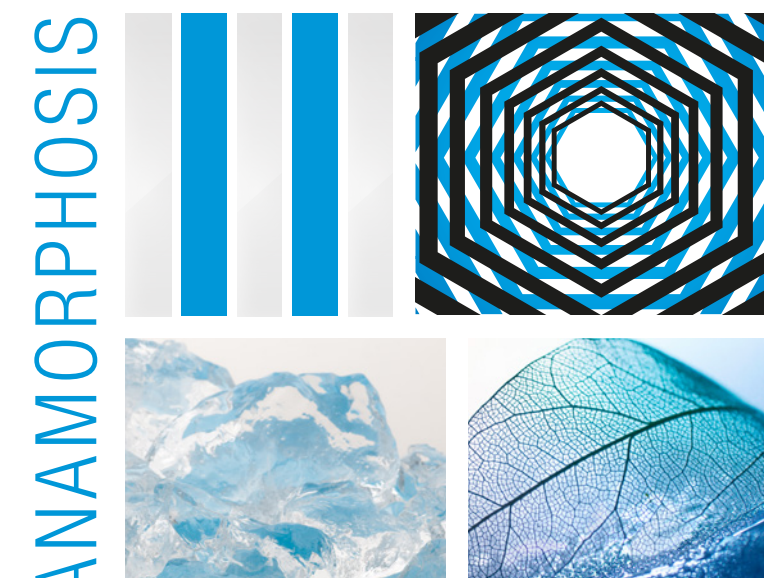
LAND ART



ART DECO



OP ART

EVERLITE
CONCEPT
*Light Architecture*DANPALON®
KINETIC

FACADE IN MOTION

DANPALON® KINETIC



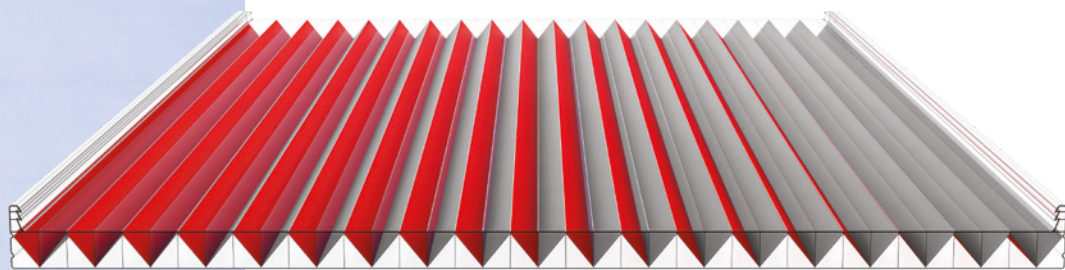
An innovative new Danpalon® panel from Everlite Concept brings you exciting new possibilities for building envelope design.

Danpalon® KINETIC enables the creation of animated façades with dynamic effects not seen before.

Depending upon the viewing angle, a building clad in Danpalon® KINETIC changes its appearance – its lighting, colour, opacity and translucency.

KEY FEATURES

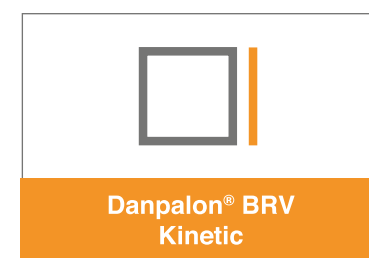
- Unique dynamic appearance
- Multiple external options within a single panel
- Infinite combinations of contemporary colours
- Alternate opacity and translucency
- Excellent technical and mechanical properties
- Integrates into Everlite Concept systems



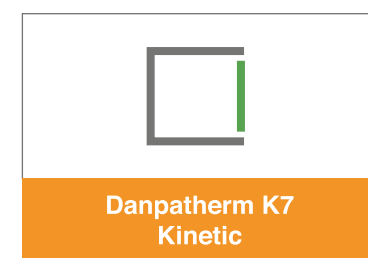
Produced from the highest grade polycarbonate material the KINETIC panel uses a specialised extrusion technique to integrate alternately coloured surfaces arranged diagonally between two external skins.

In line with it's existing product range, Everlite Concept have ensured the KINETIC panel is engineered to meet stringent technical demands, including thermal, optical, acoustic and mechanical performance.

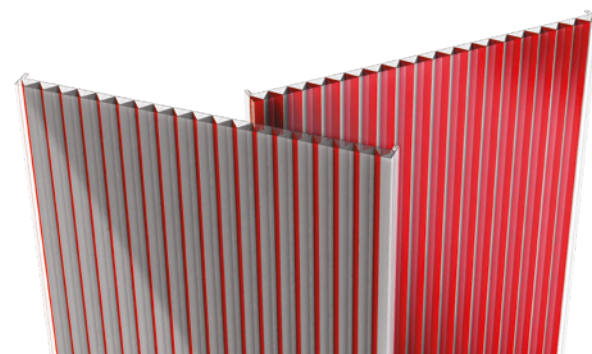
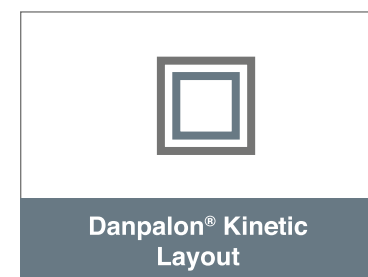
Danpalon® KINETIC panels, equipped with our unique double-notched edge connector, integrate perfectly into existing systems, ensuring an unsurpassed aesthetic appearance.



A ventilated rainscreen cladding system meeting requirements for energy efficiency, quality and durability in both refurbishment and new build projects.

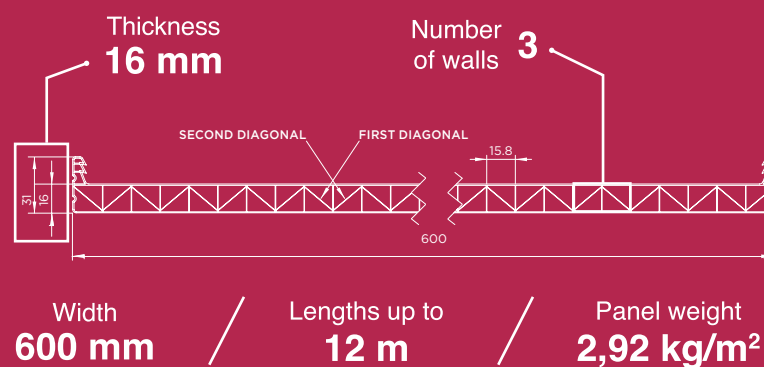


A translucent factory built cassette system designed for ease of installation as well as excellent thermal and acoustic properties.



FACADE IN MOTION

TECHNICAL SPECIFICATIONS



Permissible loads under normal wind pressures according to modified rule NV65

- Maximum range between polycarbonate connector supports: 1.2m
- Maximum span between aluminium connector supports: 2.5m

Outer slope 5° (or 9%) with connector outdoors

For more information consult our technical document downloads available at www.everliteconcept.com

Performance

- Shock (performance retention)
Outside: Q4 - Inside: O3
- Impact resistance: 1200 joules

Coefficient of thermal transmission $U_g = 2.33 \text{ W / m.K}$

Light transmission TL : up to 20% depending on colour combination. (Visible light transmission 400 - 700 nm)

TREATMENT & FINISHING

U.V. PROTECTION

An incomparable, sustainable, aesthetic.

In order to preserve all its technical properties, the Danpalon® KINETIC is endowed with co-extrusion of an excellent anti-U.V. 45 µ heavily loaded.

SOFTLITE

Special finish against glare guaranteeing a real comfort and wellbeing visual.

With it's characteristic matt appearance, the renowned Softlite co-extrusion can be applied to either external surface of the KINETIC panel.

Tested and validated by the CSTB, our Softlite finish reduces glare and ensures maximum visual comfort whatever the application.

HPROTECT

High protection treatment

Danpalon's HP finish may be applied to either external surface of the KINETIC Panel and is particularly useful in high risk areas where additional hardness and resistance are required.

COLOR GAMES



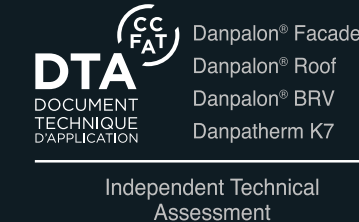
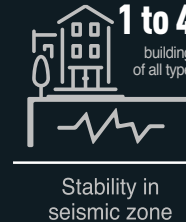
CREATE YOUR KINETIC BUILDING

With its stunning dynamic effect, achieved by combining 2 contemporary colours of your choice, Danpalon® KINETIC brings you new perspectives in architectural design.



Our regional sales engineers will help and support you in your KINETIC project.

FURTHER
DETAILS:
WWW.EVERLITECONCEPT.COM/EN/KINETIC



EVERLITE
CONCEPT
Light Architecture

WWW.EVERLITECONCEPT.COM

